

Welcome, to the second edition of the HHS family newsletter from Sarah & Jacqueline

February's newsletter will have a curriculum focus, with updates from all class teams and coaches. The focus for each monthly newsletter alternates between curriculum developments and matters relating to family and SEND initiatives in Buckinghamshire. As always we welcome your feedback.

One of the highlights this term was the transition fair. Representatives from post school organisations were on hand to guide parents through options available post 19yrs. You will find more details in this newsletter.

Thank you to Sarah (Family Advocate) for editing this month's newsletter

It's been another busy half term, and it isn't over yet! Whether you need support with form filling, letter writing, accessing services that can support your child or young person, sign posting to information, or just need to chat with someone who has experience of parenting a child with additional needs, then I am here to support you if I can.

A reminder that my workdays and times are Monday – Thursday from 10-2 during term time- please do get in touch if you would like my help. You can contact me via the school office, by email (familyadvocate@hhschool.org.uk) or by sending me a message in your child's communication book.

Events in the cafe this week

On Wednesday, representatives from FACT Bucks and the SEND team will be in our cafe to meet and answer queries regarding SEND. This event is open to anyone with a SEND query. This will be from 10am - 12pm

Sarah

GENERAL REMINDERS:

· Friends of Heritage House School (FOHHS) – We now have a committee of Chair, Vice Chair, Secretary and Treasurer. Please do get in touch with me if you would like to be involved – we would really welcome your support. The raffle took place on Friday 15th December 2023 in The Potting Shed Café at school. Thanks to your very generous support, we raised more than £500. Thank you! We are also extremely grateful to all of the local shops, businesses and other organisations who donated such a fantastic range of fabulous prizes. Many congratulations to our lucky winners - we hope that you enjoyed your prizes!



· Hobbies at Home – this is now live, please remember to complete the loan agreement and return to the school office as soon as possible. Even if you don't wish to borrow items at the present time, please do complete and return the agreement as this will help to minimise delays when you decide that you are ready to begin borrowing. We have over 80 items available to borrow, so there is sure to be something for everyone!



Uniform

Thank you to all learners (and families) for the great response to wearing a uniform. A reminder that the only compulsory part of the uniform is the sweat top or cardigan. Other items of clothing are available such as a polo shirt, but this is not compulsory.

It is fab to see learners in uniform across the school. When our learners are off site they are great ambassadors for the school. I understand that there has been a delay in obtaining the uniform – we have been in touch with the company to speed up the process.

If you are yet to purchase, or need to purchase more, please [click here.](#)



January 2024

· If you haven't already done so, you might like to sign up for the Buckinghamshire Additional Needs Register (BANDS) which helps the Local Authority understand need in the local area. When you register, you can also request a Max Card which entitles families to discounts to lots of attractions throughout the UK.

DID UK CARD – is a nationally recognised Disabled Identity Card. The aim of the National DID Card is to remove the need for individuals to carry their paper documentation with them at all times. The card will have a photograph of the cardholder and will only be issued to disabled people who are in receipt of some form of disability allowance or medical evidence to support your application. The card is valid for two years and can be applied for online or by post

Meet the professional

Message from Jo Mills, Family Support Service

Welcome to the Buckinghamshire Family Support Service.

My name is Jo Mills and I am the local Link School Family Support Worker for Heritage House

The Family Support Service offers support to children, young people, and families with children and young people aged 0 to 19 or up to 25 years with a special educational need or disability (SEND). This support includes:

- advice through the Bucks Family Information Service
- open-access sessions and health services at Family Centres
- specific support with issues affecting families
- collaborative working alongside schools and other professionals.

Families can drop in anytime during the week to one of the three Family Centre Plus sites in Buckinghamshire.

The nearest Family Centre Plus to Heritage House School is:

Newtown Family Centre Plus, Berkhamsted Road, Chesham HP5 3AT.

All activities at the centres are free for children, young people, and families.

Through the Family Support Service, parents and young children can also access a variety of free courses to support parenting of young children & Teenagers as well as child specific courses to help wellbeing, anxiety low-mood and transitioning to secondary school.

Buckinghamshire Family Service also provide more specific support to families and individuals who are facing more complex challenges, through group work or support from a dedicated Family Worker. One-to-one support is available in a setting that is comfortable, such as in the home, a local community setting, or somewhere else.

Families can refer themselves or can ask for help from a school, health, or other professionals who will make a referral on their behalf.

For more information on how Buckinghamshire Family Support Service can help you and your family, please [click here](#).

The Buckinghamshire family Information website is also a brilliant place to find out more information about the special educational needs and disabilities (SEND) local offer & support available in Buckinghamshire for children and young people aged 0 to 25 with SEND. This includes children and young people with or without an education, health and care (EHC) plan.

We aim to:

- provide clear, accessible information about available services and support
- ensure that young people with SEND, and their parents and carers, are listened to when local services are developed and reviewed.
- provide information on health, education and social care.

How to access the local offer

The easiest way to see our SEND local offer is to visit: [www.Family Information Service](http://www.FamilyInformationService.org.uk) | Buckinghamshire Family Information Service

You can also access SEND local offer information by:

- using a public computer in your local library
- going to one of our family centres
- asking professionals you work with for help, such as school staff or social workers
- telephoning BFIS on 01296 383 293

TRANSITIONS FAIR

We recently held our Transitions Fair in the LEAF Building in school. The event was primarily aimed at learners in Year 9 and above. It was attended by representatives from the Local Authority SEN Department and Social Care Transitions Team, local college and other educational providers, a local law firm and other organisations that can provide advice and support for our learners and their families as they begin to prepare for adulthood.

We plan to hold this event annually, so if you were unable to attend or would like to attend again, there will be opportunities for you to do so.

It was fantastic to see so many of our families at the event – the key take away from the Fair is that it is never too early to start thinking about the future and finding out more about the types of support that is available for your young person.



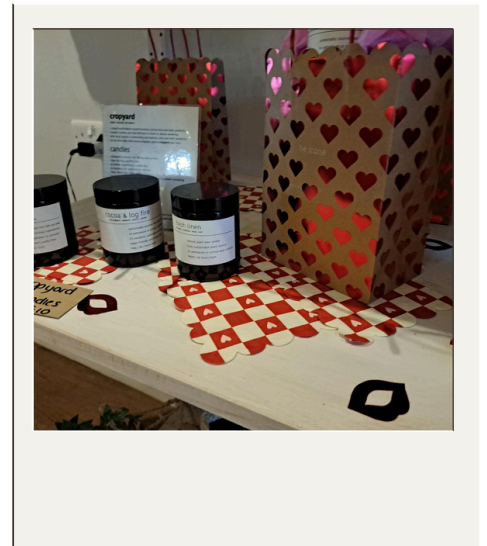
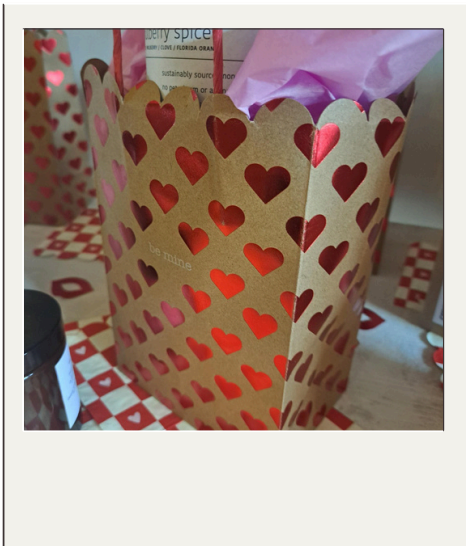
INDEPENDENCE FOR OLDER LEARNERS

The Transitions Fair also highlighted the importance of supporting your young person's transition to adulthood by enabling them to maximise their independence, and ensuring that they have plenty of time and opportunity to develop and practise these new skills. Many of our older learners will undertake travel training as part of their learning. Families can apply for a Bus Pass for their young person which entitles them, and in many cases a companion, to free bus travel. Please click on the link below for additional information and to make an [application](#)

Families may also wish to arrange for their young person to have their own debit card (there are lots of different cards/ schemes available designed with young people in mind, please contact your bank to explore this further) so that they can use this to make small purchases such as a snack or a drink when they access the community as part of their learning.

The Potting Shed Café

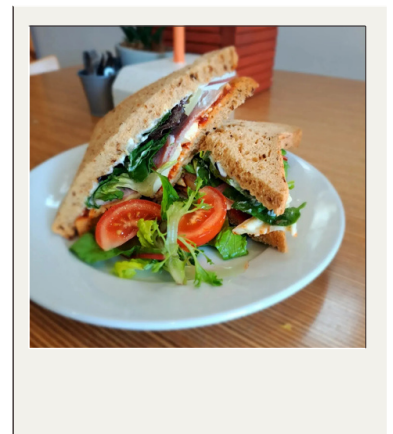
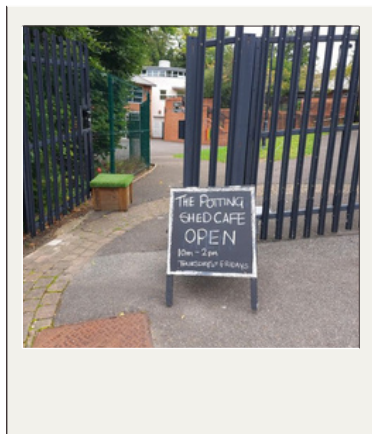
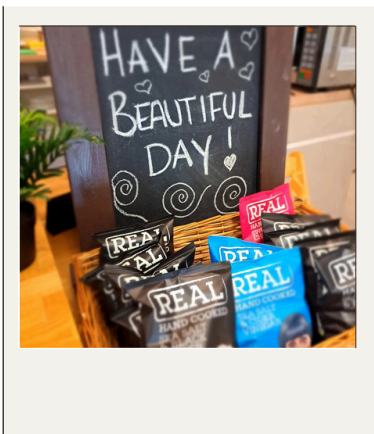
The café is open to the public on Thursdays & Fridays from 9am -2pm. Please do come along with friends and family to enjoy the offer. We also have some Valentine gifts in the café such as candles, cards and food items. Who would have thought Heritage House School would be the destination for all things Valentine!



Recently a parent asked if he could have lunch with his child in the café. We were more than happy to organise this. The meal was a great success aided by delicious food.

We are also organising for 3 friends in Willow class to have lunch in the café together – I can't tell you how excited they arephotos to follow.

So lots of exciting ideas bubbling away for our fantastic café –do visit if you are in the area



Have a lovely half term break

FACT BUCKS AND BUCKS COUNCIL

Chiltern and South Bucks iSEND Meeting

AT HERITAGE HOUSE
SCHOOL, POTTING SHED
CAFE, CHESHAM, HP5 3BP



A 2 Hour drop
in, Q&A

Free and
open to
parent
carers

Wednesday
7 February

10:00 - 12:00

Come and meet
the iSEND team,
share
experiences, ask
questions.

For more information
and confirm attendance:

claire@factbucks.org.uk



Mental Health
Support Team
Buckinghamshire

MALE CARERS GROUP

Lets talk about: Strategies to Manage Common Childhood Behaviours

Session Overview:

- Arrival/general introductions
- Behaviours and Strategies
- Increase confidence in managing child's behaviours
- Parenting Programmes
- Q & A/Feedback



Venue: Princes Risborough Family Centre
Wellington Avenue
Princes Risborough
Bucks, HP27 9HY
Time: 6.30pm - 8pm
Date: 22nd February 2024

www.oxfordhealth.nhs.uk/camhs/bucks/mhst
bucksmhst@oxfordhealth.nhs.uk
01865 901 566

Disability Badminton Junior Festival South Central



Date: 03/04/24

Time: 01:00pm - 3:00pm

**Location: Wycombe Badminton
Centre, Crest Road, High Wycombe,
HP11 1UA**

**Contact: Alistair (Regional Disability Coach)
on alistair@badmintonwycombe.co.uk**

Junior badminton session for players with a physical disability age 9-16yrs.
Suitable for beginners or those who currently play badminton.

Contact your regional disability badminton coach above for more information.

Disability Badminton Junior Festival South Central



Date: 10/04/24

Time: 01:00pm - 03:00pm

**Location: Wycombe Badminton Centre,
Crest Road, High Wycombe, HP11 1UA**

**Contact: Alistair (Regional Disability Coach)
on alistair@badmintonwycombe.co.uk**

Junior badminton session for players with a physical disability age 9-16yrs.
Suitable for beginners or those who currently play badminton.

Contact your regional disability badminton coach above for more information.